

Czech smart city and intelligent mobility solutions mission IN BELGIUM



Embassy of the Czech Republic
in Brussels

BRNENSKÉ KOMUNIKACE

The company Brněnské komunikace a.s. is a joint-stock company whose sole shareholder is the Statutory City of Brno (The second largest Czech city with a population of almost 400.000 people). It provides mainly civil engineering activities of transport and land constructions, design activities and property-legal preparation of upcoming constructions, it prepares forecasts, plans and transport models. On the territory of the city of Brno, it manages and maintains traffic lights at intersections, traffic signs. An inseparable part of the wide range of activities is also central traffic management in the city of Brno.

Address:
Reneská třída 787/1A 639 00
Brno - Styrice
Czech Republic

Contact person:
Vit Blaha
Tel.: +420 532 144 111
E-Mail: blaha.vit@bkom.cz
Website: www.bkom.cz



CROSS ZLIN

We transform ordinary cities into smart cities. We make sure that parking is easy, passage is faster, roads and motorways are not overloaded and that it is possible to control traffic effectively. Since year 1994.

The advanced technologies we develop in-house at CROSS are applied in everything we do – ITS and Smart Cities projects, Traffic Control, Parking, Weigh-In-Motion, Road Telematics and Road Weather status. We have specialists on hand for consultation capable of discussing a potential project of any scale, covering all the bases – from A to Z. An important factor for clients is the knowledge that any state-of-the-art proposal from us will be interoperable with the software or hardware they already have in place and can be customized to suit the given application.

Address:
Hasičská 397, Louky
763 02 Zlín
Czech Republic

Contact person:
Jakub Seliga
Tel.: +420 720 069 672
E-Mail: seliga@cross.cz
Website: www.cross-traffic.com/en/

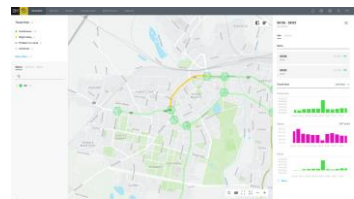
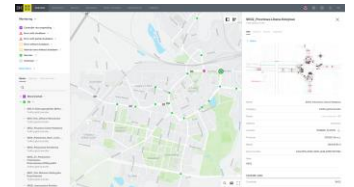


INCINITY

Incinity is a purely Czech software company focused on the development, delivery and support of its own integration platform for smart cities and intelligent transport systems called Invipo. The Invipo integration platform is a simple, user-friendly web application designed to centralize the maximum number of data sources in city and intelligent transport systems. By bringing all information together in one place, in one overarching application, it exposes its users to problems in the management of city technologies, offers quick and intuitive solutions to situations that arise and, through a set of modern channels, delivers useful and always up-to-date information to the end recipients.

Address:
Hasičská 397, Louky
763 02 Zlín
Czech Republic

Contact person:
Lukas Blatecky
Tel.: +420 727 865 198
E-Mail: lukas.blatecky@incinity.cz
Website: www.incinity.cz/en



IVO HERMAN

"Ing. Ivo Herman, CSc." is focused on the production and development of HW and SW for public transportation. We have equipped thousands of vehicles in several European countries with our on-board computers, displays and other hardware, we have produced thousands bus stop panels, our software controls the dispatching in dozens of cities. The top notch of our production is the solution for public transportation and emergency vehicles priority using the European V2X/C2X (C-ROADS) standard. Besides successful international tests, we can present several years of deployment in real traffic at more than a hundred intersections and roughly thousand vehicles.

Address:
Brněnska 993,
664 42 Modrice,
Czech Republic

Contact person:
Kamil Krejci
Tel.: +420 734 360 517
E-Mail: krejci@herman.cz
Website: www.herman.cz/en/



DATA FROM SKY (RCE SYSTEMS)

At DataFromSky, we are redefining the meaning of SMART by converting any video stream into the FLOW of actionable insights. Our visual traffic framework makes you a designer of the sensor you need. Born for integration, powered by AI, and running everywhere. Follow the FLOW – our masterpiece in traffic intelligence.

DataFromSky's reinvention of the traffic monitoring segment in 2014 started the next era of traffic surveys based on the combination of drones, AI, and trajectory extraction. Five years later, we designed a universal visual traffic language for all traffic tasks - FLOW - the first tool ever which interprets the data live is right at your fingertip. Nowadays, the FLOW is running directly in smart cameras, standalone edge devices, and AI city servers. It is a truly open platform transforming any video stream into thousands of different sensors working in parallel and cooperating to make the cities and roads smarter and safer. So powerful, so universal!

Address:
Palackeho trida 53
612 00 Brno
Czech Republic

Contact person:
Tomas Sarocky
Tel.: +420 604 358 993
E-Mail: tomas.sarocky@rcesystems.cz
Website: www.datafromsky.com



SKODA TRANSPORTATION GROUP

Škoda Group is well-known Czech brand with more than 160 years tradition in producing public transport vehicles. Our products include low-floor trams, suburban train units, metro trainsets, electric buses and trolleybuses, as well as control and drive systems for transport systems. Besides vehicle manufacturing in several production sites in the Czech Republic and one in Finland, Škoda Group also provides a long-term service and modernization of vehicles. There are other daughter companies in Germany or Hungary, altogether employs Škoda over six thousand people. The Group invested in 2020 around 70 mil EUR in research and development.

Address:
Emila Skody 2922/1
301 00 Plzen
Czech Republic

Contact person:
Mike Niebling – Skoda Transportation Group
E-Mail: mike.niebling@skoda.cz
Website: www.skodagroup.com



SWITCHIO (MONET+)

Switchio is the comprehensive platform for processing electronic payments. Elimination of paper tickets, cheaper fare options, lower operating costs; tap-and-go technology makes travel on public transport easier than ever before. We develop a ready-made, robust software platform for secure processing of contactless digital payments in public transport. Our comprehensive white-label solution is also ideal for building profitable partnerships with retail chains, car park operators, filling station networks, banks, and payment facilitators. PCI DSS certified and fully compliant with VISA MTT and Mastercard PAYG security standards. Switchio is a division of MONET+, an industry leader in security identity and electronic payment solutions.

Address:
Za Dvorem 505
763 14 Zlin – Stipa
Czech Republic

Contact person:
Kamil Hanacek
E-Mail: khanacek@switchio.com
Website: www.switchio.com



TENZOVAHY

Weighing systems from TENZOVÁHY have been operating reliably for more than 25 years both in the Czech Republic and in other countries in Europe, Asia and Africa. TENZOVÁHY products have been meeting for a long time national and international standards valid in the EU, e.g. OIML R. 134 et seq standards. In addition to many industrial companies, our customers also include state supervision institutions dealing with weighing for law enforcement in traffic. TENZOVÁHY is ready to participate in the preparation of infrastructure projects for new generation networks of fully unattended checkpoints for weighing vehicles, or to assist with the establishment of pilot installations.

Address:
Machatova 345/3
783 01 Olomouc
Czech Republic

Contact person:
Jiri Cermak
Tel.: +420 730 167 153
E-Mail: jiri.cermak@tenzovahy.cz
Website: www.tenzovahy.com

